

NSG

GROUP

The NSG Group

THE NSG GROUP IS THE WORLD'S LEADING MANUFACTURER OF GLASS AND GLAZING PRODUCTS FOR THE ARCHITECTURAL, AUTOMOTIVE AND TECHNICAL GLASS SECTORS.



The NSG Group is the World's Leading Manufacturer of Glass Products for the Automotive, Architectural, and Technical Glass Industries



With over **26,000 employees**, we have principal operations around the world and sales in over **100 countries**

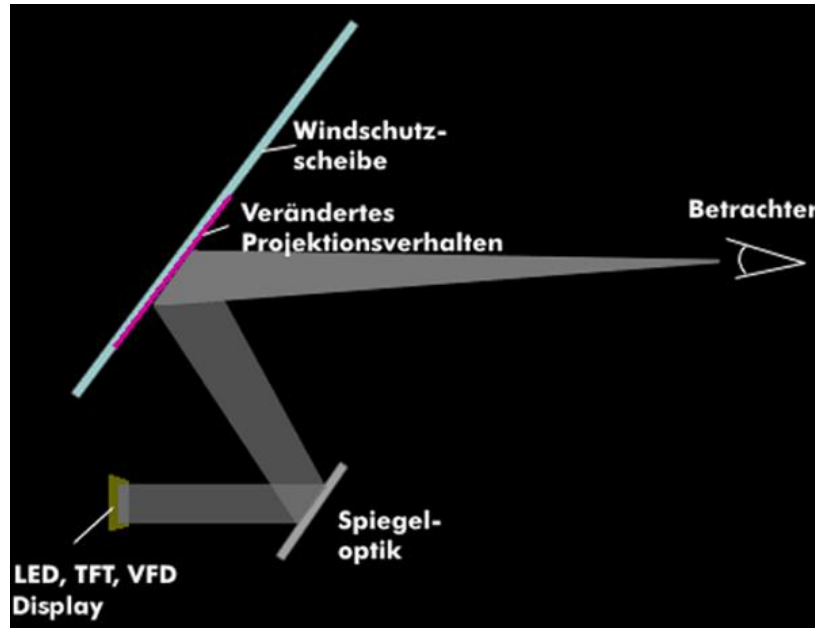
The NSG Group – Architectural



Reichstag, Berlin – Pilkington **Pyrostop**[®]

The NSG Group – Automotive

Head-Up-Display für **AUDI, BMW und Daimler**



The NSG Group – Automotive

Sundym Select: schaltbares Dachglas



The NSG Group – Tätigkeitsfelder

Kaufmännisch:

- Vertrieb
- Einkauf
- Personal
- IT
- Controlling
- Projektleitung

Technisch:

- Produktion
- Instandhaltung
- Logistik
- Projektleitung

Back -Up

The NSG Group – Automotive

1951



Erste VSG-Scheiben aus Witten

1979



Drahtbeheizte WS (W460 – 463 G-Modell)

1979



Drahtbeheizte VSG-Heckscheiben (W126 S-Klasse)

1991



Isolierglas Seitenscheiben (W140 S-Klasse)

1984



WSS mit Siebdruck (W 124 E-Klasse)

1995



Pressgebogene WSS (W 210 E-Klasse)

1998



Antennen in IR-Verglasung (W 220 S-Klasse)

1998



VSG-Seitenscheiben (W 220 S-Klasse)

2004



Komplexe ESG-Heckscheibe (W169 A-Klasse)

2009



Komplexgebogene WSS (BR 197 SLS-AMG)

2011



Magic-Sky-Control Rooflight (R172 / R231)

2011



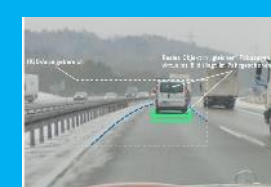
WOP-Antennen (R172 - SLK)

2020



Composite WSS (C190 – AMG GT)

2020



Augmented Reality HUD (BR223 / BR297)

in future...



..many more to come

The NSG Group – Automotive

<p>1986</p>  <p>Isolier-Doppelverglasung (E32)</p>	<p>1994</p>  <p>Einbruchhemmende Verglasung (E38/E39)</p>	<p>1998</p>  <p>Pressgebogene Frontscheiben (E46)</p>	<p>1998</p>  <p>SiglaSol IRR-Technologie (E46)</p>	<p>2001</p>  <p>Einbruchhemmendes Glas (E65)</p>
<p>2010</p>  <p>KAFAS 1 (F10 / F12 / F13)</p>	<p>2011</p>  <p>KAFAS 2 F30/F32/F34</p>	<p>2015</p>  <p>KAFAS 3 (G11 / RR11)</p>	<p>2018</p>  <p>KAFAS 4 (G14 / G15 / G16 / G29)</p>	<p>2021</p>  <p>KAFAS 5 (Adcam) i20 / G26</p>
<p>2021</p>  <p>IR-Beschichtung (i20)</p>	<p>2021</p>  <p>Temperatursensor Adcam (i20)</p>	<p>2021</p>  <p>Optikverbesserung für Autonomes Fahren (i20)</p>	<p>in future...</p>  <p>..many more to come</p>	